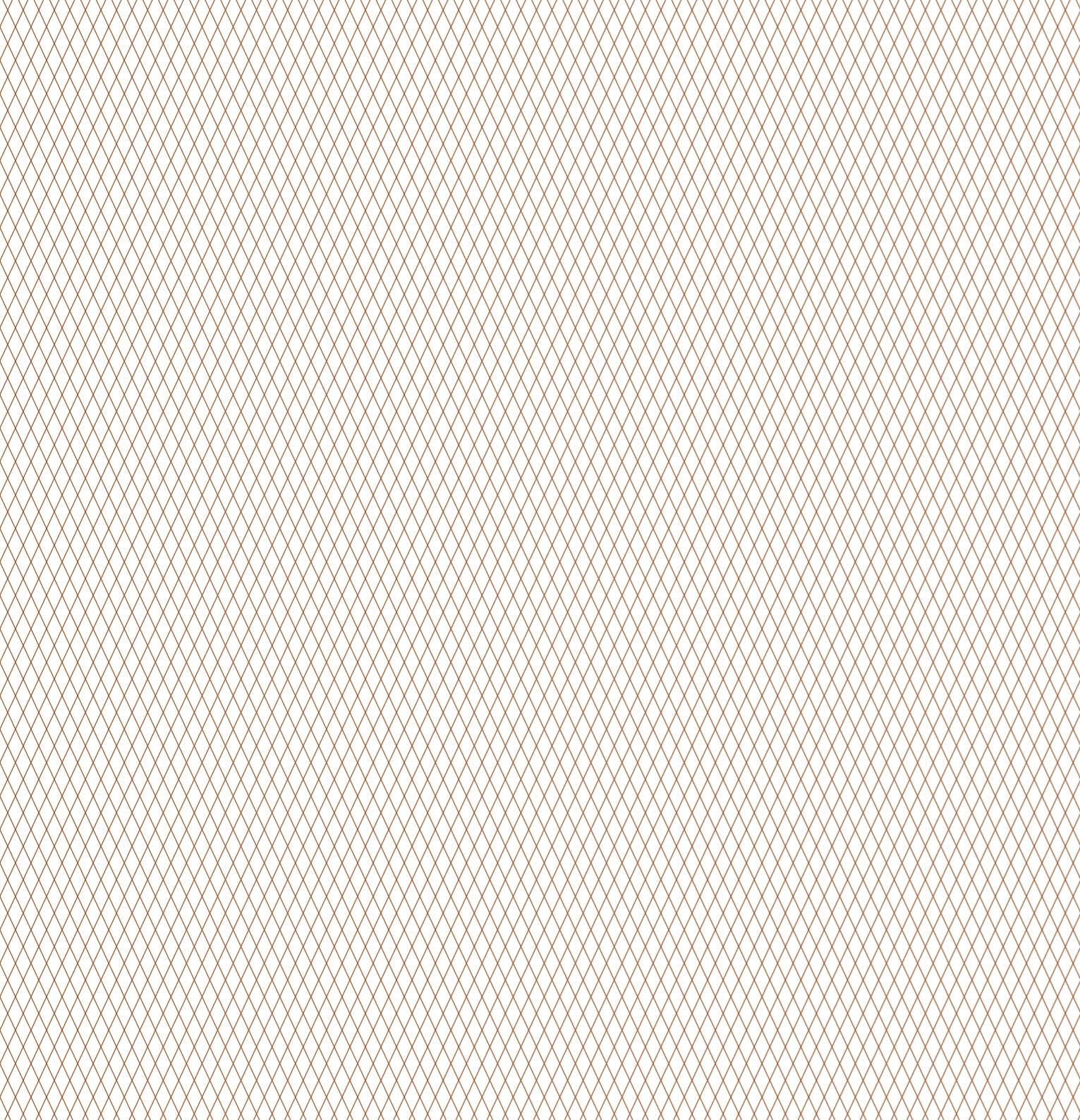




S A A I

RESORT & RESIDENCE









## THE REALM OF GOLDEN DREAM

---

A prosperous land from our ancestors with a long private beach is being developed into the exclusive beachfront villas. The SAAI concept will showcase a touch of Asian-Tropical style that can perfectly blend with nature, giving you a splendid sense of living at the very edge of the horizon and the sea.

SAAI offers a truly beachfront community with only 31 private pool villas on 40 rais of land. Our residence offers two and three bedrooms from single-level to duplex with its own private pool. SAAI area sits along a mile of golden sand, overlooking to the panoramic sea view on the private beach in Prachuap Kiri Khan province.











## PROJECT INFO & MASTER PLAN

**Developer Name :** LIV ASSET Co.,Ltd.  
**Project Location :** Sai Thong, Bang Saphan Noi, Prachaup Khiri Khan, Thailand  
**Land Area :** Approximately 36 Rai  
**Project Type :** Private Beachfront Pool Villas for Sale  
**Total Units :** 31 Villas

## TYPE OF VILLA

### Private Residence

<i>Type A</i>	3 Bedroom Beachfront Pool Villa	7 Units
<i>Type B</i>	3 Bedroom Seaview Pool Villa	5 Units
<i>Type C</i>	2 Bedroom Seaview Pool Villa	9 Units

### Resort Residence

<i>Type D</i>	Duplex Seaview Pool Villa	8 Units
<i>Type E</i>	Duplex Beachfront Pool Villa	2 Units

<b>Master Plan</b>	1	Parking	4	Lobby	7	SAAI Villa Type C	10	Pool Bar
	2	SAAI Vilion	5	SAAI Villa Type A	8	SAAI Villa Type D	11	Main Pool
	3	Staff & Service	6	SAAI Villa Type B	9	SAAI Villa Type E	12	Specialty & Buffet







**TYPE A**  
Total Area 587 SQ.M.

## 3 BEDROOM BEACHFRONT POOL VILLA



This spacious three-bedroom residence combines to make up this premier villa offering stunning sea views, with a living room, dining room, a private infinity pool and garden

Set on the 24-meter beachfront this vast three-bedroom pool villa offers stunning views of the gulf of Thailand. It features a spacious living area, dining room and kitchenette for in-villa dining. The master bedroom offers lovely sea views and large open plan bathrooms with double vanity basins, bathtub and outdoor shower. The second guest room also faces the sea view and the king-bed guest room has a garden view to the rear of pavilion. There's a private infinity pool and garden area with a sun terrace.

### Key Fact

- Villa size is 580 m<sup>2</sup>
- 24-meter beachfront position
- Master bedroom with king-size bed featuring a private bathroom including double vanity basins and an outdoor bathtub
- Large living area with extra-large couches and comfy scatter cushions
- Panoramic sea view from master bedroom, twin queen-bed room and living area.
- Private infinity-edge pool
- Terrace with sun loungers





## TYPE B

Total Area 568 SQ.M.

### 3 BEDROOM SEAVIEW POOL VILLA



1<sup>st</sup> Floor



2<sup>nd</sup> Floor

Larger families will love this wonderful lifestyle three-bedroom villa, with impressive sea views and a private pool.

This spacious three bedroom villa has a roof-top terrace and upstairs master bedroom offering ocean views. Two remaining guest bedrooms are on the ground floor with spacious living area, dining room and kitchenette for in-villa dining. It also comes with a private pool, sun-loungers terrace and sunken seating area.

#### Key Fact

- Villa size is 568 m<sup>2</sup>
- Spectacular sea view from master bedroom and roof-top terrace
- Each master bedroom has large open plan bathrooms with double vanities and sea-view outdoor bathtub
- Large living area with extra-large couches and comfy scatter cushions
- Private pool and terrace with sun loungers
- Located steps from the beach





**TYPE C**  
Total Area 398 SQ.M.

## 2 BEDROOM SEAVIEW POOL VILLA



1<sup>st</sup> Floor

Two-bedroom villa ideal for families and friends has dining and living room and a beautiful garden pool.



2<sup>nd</sup> Floor

A very spacious two-storey villa with two bedrooms. The master bedroom which is located on the upper floor featuring panoramic sea view. It has a large open plan bathroom, double vanity basins, a bathtub and shower. The living and dining area is on the ground floor with private pool and terrace. The twin guest room is located in the rear pavilion and has a garden view.

- Key Fact**
- Villa size is 398 m<sup>2</sup>
  - Spectacular sea view from master bedroom and terrace
  - Master bedroom has a large bathroom with double vanities and outdoor bathtub
  - Private pool and terrace with sun loungers
  - Located steps from the beach





GROUND FLOOR - POOL ACCESS UNIT



UPPER FLOOR - SEA VIEW UNIT

### **TYPE D**

Total Area 150 SQ.M.

## **DUPLEX SEAVIEW POOL VILLA**

Experience this very spacious split-level villa with panoramic sea views and a 50-meter lap pool.

A very spacious two-level villa with two bedrooms, The master bedroom which is located on the upper floor featuring magnificent sea view and twin queen-bed room, on the ground floor, can access to 50-meter lap pool. Both also has a large open plan bathroom with double vanity basins, shower and bathtub. Each bedroom has its own terrace with sun loungers.

### **Key Fact**

- Villa size is 150 m<sup>2</sup>
- Spectacular sea view from the upper floor
- Pool access from the ground-level bedroom
- Terrace with sun loungers
- Double vanity basins and large bathtub
- Located just steps from the beach

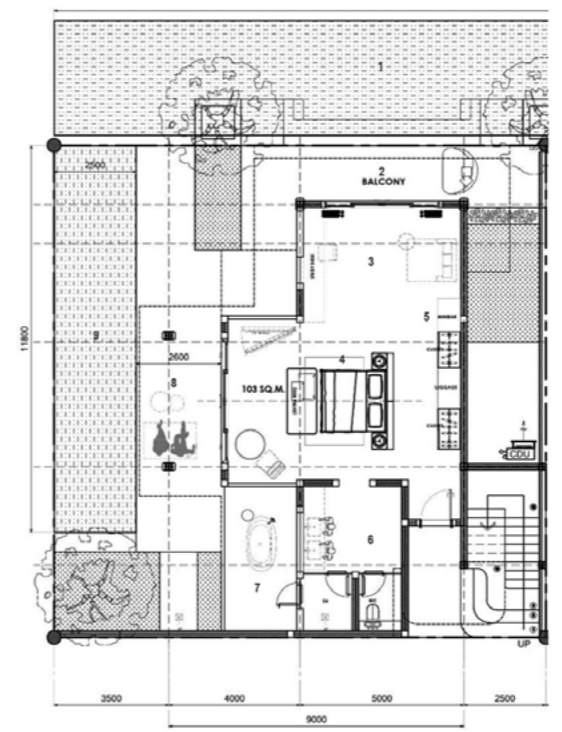




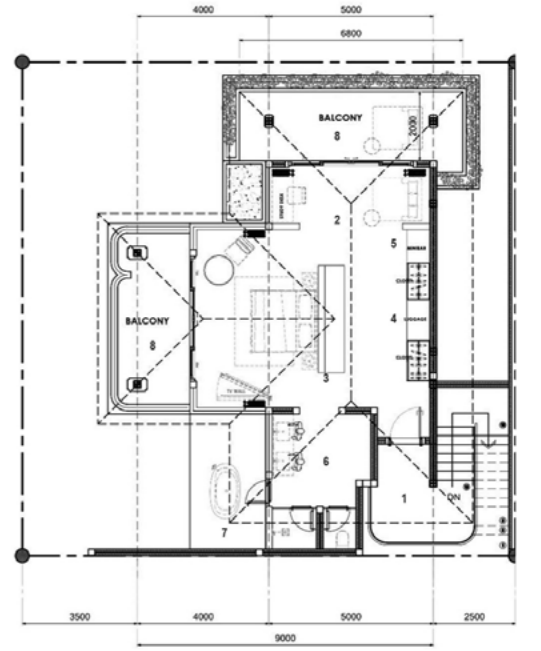
## TYPE E

Total Area 200 SQ.M.

# DUPLEX BEACHFRONT POOL VILLA



1<sup>st</sup> Floor



2<sup>nd</sup> Floor

Tropical beachfront villa with endless sea view, outdoor pool deck, and sea-facing bathtub.

Two-level villa is located on the beachfront cliff. Two master-bedroom suites, separated on the upper and ground floor, offer privacy with fantastic sea views. Both suites offer a spacious bathroom with double vanity basins and sea-facing bathtub. The private pool has a terrace with sun loungers.

### Key Fact

- Villa size is 200 m<sup>2</sup>
- Absolutely beachfront
- Panoramic sea view
- Private infinity pool on ground floor
- Private terrace with sun loungers
- Large open plan bathroom with double vanities basins
- Sea-facing Bathtub and outdoor shower





## THE DEVELOPMENT TEAM

DEVELOPER



ARCHITECTURAL



INTERIOR

Bellman  
design studio

LANDSCAPE

PROCESS  
LANDSCAPE

BRANDING & CREATIVE

ARN BRANDING &  
CREATIVE  
ONE OF ARN CREATIVE STUDIO FAMILY.









BEACHFRONT LIVING  
IN TROPICAL ESCAPE

---

OWN A RESIDENCE OF .....  
ON THE MOST PRIVATE BEACH  
IN THAILAND



**15/5 Moo 5, Sai Thong, Bangsaphannoi, Prachuap Khiri Khan 77170**  
**T : +66(0) 86 656 9798 | E : [info@saairesidence.com](mailto:info@saairesidence.com)**

**[www.saairesidence.com](http://www.saairesidence.com)**